

# Matching Engine

*by Spanish Point Technologies*



Microsoft Ireland  
Partner of the Year 2022 Winner  
ISV



Microsoft Ireland  
Partner of the Year 2022 Winner  
App Modernisation and Innovation

Winner  
Modernising  
Applications on Azure  
2021 Partner of the Year  
Ireland



Winner  
Azure DevOps  
2020 Partner of the Year



Best Use of IT  
**IRISH  
HEALTHCARE  
AWARDS**  
**2019**  
Winner

# Matching Engine

Spanish Points Matching Engine is an enterprise business system for Copyright Management Organizations. It incorporates the key business functions of these organizations. It is a fully cloud native solution including modules to support Repertoire Management, Data Ingestion, Usage, Distribution and Membership Services.



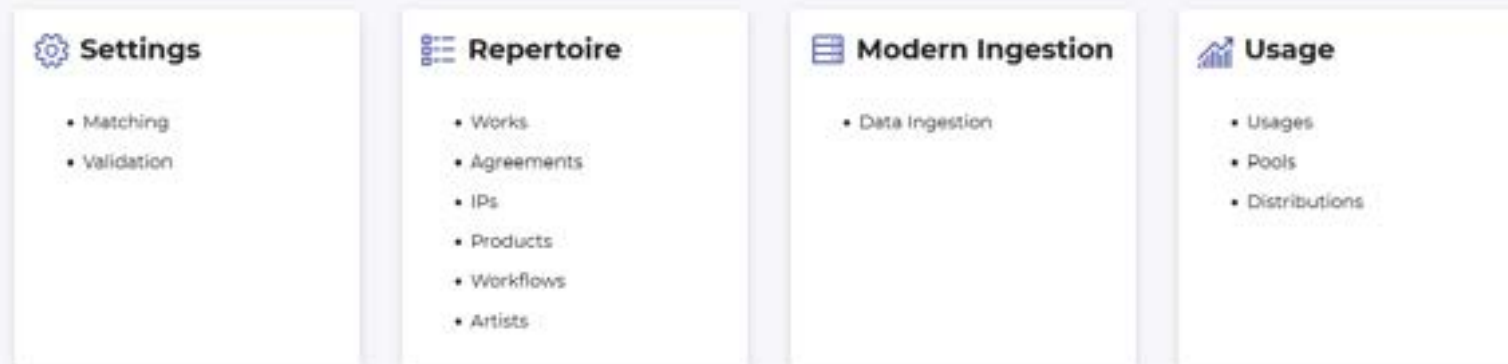


## The Matching Engine Modules

Currently, our SaaS based solution for copyright management organisations, Matching Engine, has four core modules: **Matching, Repertoire Management, Modern Ingestion and Usage Module**. These modules have been successful and have enabled us to further expand our business internationally.

The home page which displays 4 modules with direct links to databases, and functionalities within the Matching Engine:

- ◆ **Settings** – Matching and Validation.
- ◆ **Repertoire** – Works, Agreements, IP's, Products and Workflows.
- ◆ **Modern Ingestion** – Data Ingestion.
- ◆ **Usage** – Maintenance.



## Matching Module

The Matching Engine is a system that provides a set of modules for the maintenance of society's repertoires. The Matching and Validation functionalities can be found in the Settings module box.

### Benefits and features of the Matching Module



**Modern Cloud Architecture**



**Installed Near You**



**Scaling**



**Data Ingestion**



**Multilingual/Multi-Character Set**



**Input File Formats**



**Setup and Configuration**



**Fully Managed**



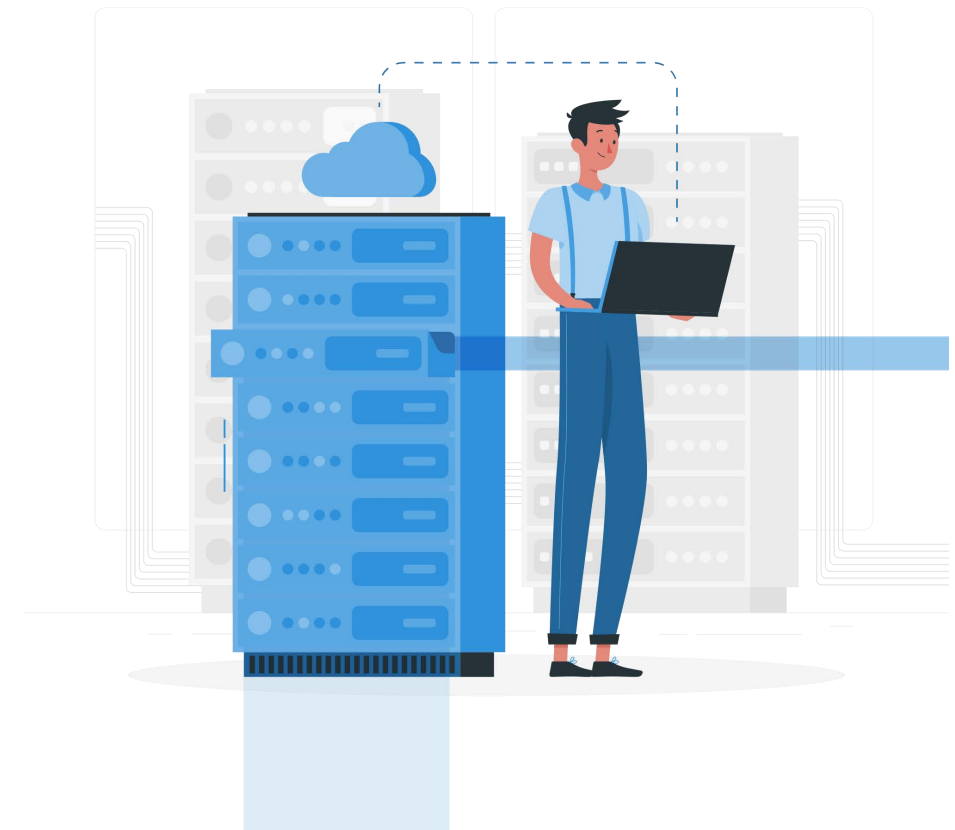
**Cost-Effective**

## Repertoire Module

The Matching Engine is a system that provides a set of modules for the maintenance of society's repertoires. The Repertoire module provides an interface with the following options for Repertoire maintenance:

### Benefits and features of the Matching Module

- ◆ Multi Territory
- ◆ Supports Mechanical, Performing Rights and other right types
- ◆ Supports configurable lines of business
- ◆ Integrated Version History to track all versions of work information
- ◆ Agreement Based – Administrator, Sub Publisher, Writer, Arranger etc..
- ◆ Supports complex carve in / carve out scenarios
- ◆ Modern Ingestion for Repertoire – Extensible for other formats
- ◆ Integrated with core Matching module for repertoire matching and reconciliation
- ◆ Configurable workflow
- ◆ Data Lakehouse for analyzing repertoire activities and creating subscriptions to updates.
- ◆ Extensive Integrations OOTB



### OTB Integrations

- ◆ CWR Ingestion and Acknowledgements
- ◆ WID Ingestion & Submission
- ◆ AVI and AVR Ingestion & Submission
- ◆ CIS-Net Ingestion & Submission
- ◆ ISWC Database Integration



## Modern Ingestion Module

The Data Ingestion module provides the ability to ingest new data into the Matching Engine system, with several folders for different types of data, such as usage data.

### Benefits and features of the Modern Ingestion Module

- ◆ **Data Ingestion**—Usage Ingestion
- ◆ **Repertoire Ingestion**—Works Ingestions
- ◆ **Cues Ingestion**
- ◆ **Agreements**
- ◆ **Refreshing data from the data ingestion maintenance folders**—Each of the folders inside the usage and repertoire ingestion (Archive, error, input, output) have a “Refresh Data” button that can be used at any time to refresh their data



## Usage Module

The Usage module provides an interface to find and amend the usage allocation of works, products, pools, and distributions.

### Benefits and features of the Usage Module

- ◆ **Usages**
  - Search for usage to work information
  - Works usage group information
  - Search for usage to product information
  - Products usage information
- ◆ **Pools**
  - Register a new pool
  - Pool information
  - Pool ideas
  - Pool details
- ◆ **Distribution**

## Distribution Module

The Distribution module is designed to be highly configurable and extensible so that it can meet the needs of diverse societies. The functionality includes:

### Benefits and features of the Distribution Module

- ◆ **Distribution Management** - The Matching Engine will have a dedicated maintenance module for distributions and pools allowing the capture of fields specific to distribution and pool types.
- ◆ **Allocation**—All allocation jobs will be developed using the Matching Engine job framework based on Azure Databricks.
- ◆ **Member/Society Statements**
- ◆ **Suspense Processing and Unidentified Usage**
- ◆ **Post Distribution Adjustments**— The distribution module will include an adjustments module that will enable societies' users to debit and credit previous distribution payments, spanning a specific time-period, at multiple levels (IP/Share/Work/Product Level).



## Member Portal

The portal will include configurable online work registration and viewing, statement viewing with drill down, unidentified performances claiming and live performances/set list functionality.

### Benefits and features of the Member Portal

**Work Registration and Viewing** -All of the work information captured and displayed in our Matching Engine Work Maintenance function will be available for search and display on the member portal.

- ◆ **Statements** - interactive and detailed view of statement information for members
- ◆ **Unidentified Performances** - Enable users to match/claim unidentified performances.
- ◆ **Live Performances** - Configured to enable users to submit set list type products and performances (usage details) for those set lists.